

VP160-A244-MH/G Series Explosion-proof IR PTZ Camera

Infinova[®]
The Integrator's Manufacturer



- 4-Megapixel 1/1.8" Progressive Scan CMOS, maximum resolution up to 2560 × 1440, clear and delicate images
- 30X optical zoom, fast and accurate focusing
- Support ultra-low illumination, 0.005 lux @ F1.6 (AGC ON) color, 0.0001 lux @ F1.6 (AGC ON), black and white
- Support wide dynamic, 3D digital noise reduction, strong light suppression and other functions
- Support H.265/H.264 efficient compression algorithm, greatly reducing the bit rate
- Full-featured: heartbeat, PTZ control, alarm, audio, user management
- Intelligent wiper function, the wiper adopts automobile wiper blade, which has good weather resistance and easy replacement.
- IR-Cut Removable (ICR) Filter for Day/Night switching
- High-efficiency infrared/white light array lamp, low thermal energy, low power consumption, infrared distance up to 200 meters
- 360° continuous rotation in the horizontal direction, -90° to +90° in the vertical direction, no monitoring blind zone
- Self-contained junction box with 100M optical interface for easy installation

Product Description

VP160-A244-M series HD 4MP explosion-proof integrated IP PTZ camera is fully-developed and specially designed for use in flammable and explosive hazardous areas that has iia, iib, iic flammable gas, and the ignition temperature group is zone 1 and zone 2 of the t1-t6 group. The flammable gas or the explosive mixture formed by steam and air is also applicable to the ignition temperature group. It is a place containing a combustible dust mixture in Zones 20, 21, and 22 of the t1-t6 group. Such as: petroleum, chemical, mine, military, medicine, oil depot, ship, drilling platform, gas station, fireworks production, grain processing and storage.

The system uses 316L stainless steel to ensure its good explosion-proof performance in hazardous areas. It has an absolute operating temperature range of -4°F~140°F (-20°C~60°C). This camera is properly sealed to prevent the intake of flammable dust and ensure strong corrosion-resistant capabilities.

The user-friendly GUI interface is designed for easy PTZ control and convenient camera parameter settings. In addition, area zoom and image PTZ are also offered. The intelligent motion detection and multiple alarm responses make it even safer to use.

Mounting

Recommended Mounts:

V1571-20L-W

316L

stainless

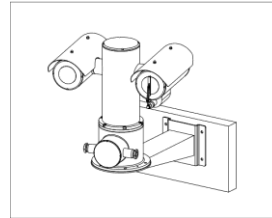
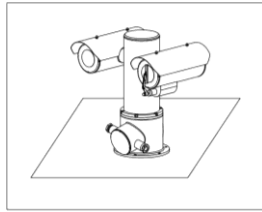
steel,

Wall

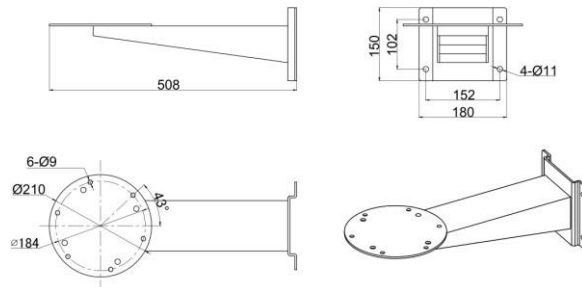
mount,

weight

5Kg



Mounts Dimensions



Unit: mm